

INN FAB

Volkswagen MK1/2/3 Drop Plate Installation Specifications

IDF018

Proper installation of this product is crucial to the safety of your vehicle, and is recommended to be completed by a qualified professional. Over torquing as well as under torquing can lead to premature hardware failure. The Drop plates reposition the stub axle on the rear beam, giving the rear of the vehicle either a 35mm or 65mm drop, depending which configuration they are installed. They also add 2° of camber to the rear wheels. Please use the following instructions as a guide. Product not “intended” for street use.

1. After placing the vehicle securely on jack stands, access and remove the four bolts that mount the stub axle to the rear beam by first removing the wheel and brake assembly.
2. Before mounting the drop plate to the rear beam, all threads along with the mounting surface of the rear beam, must be clean with a solvent/degreaser such as brake parts cleaner and allowed to dry.
3. **Apply the supplied Loctite to the clean threads of the rear beam**, only 1-2 drops needed per bolt.
4. Mount the drop plates in either of the two configurations below, by installing the two M10 Flat head socket bolts into the countersunk holes of the drop plate followed by the two M10 socket cap screws

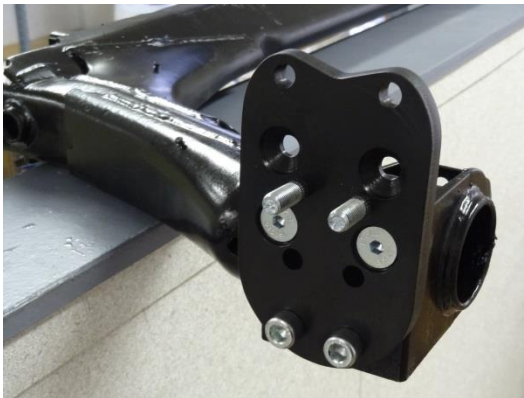


Figure 1: 65mm of Drop



Figure2: 35mm of Drop

5. The Bolts in step 4 **must be torqued to 47 ft. lbs** . A torque wrench and hex socket is required to achieve this torque accurately. Over torquing as well as under torquing can lead to premature hardware failure.

6. Reinstall the stub axle onto the studs on the surface of the drop plates using the supplied M10 flange nuts and Bolts, **torqueing them to 47 ft. lbs. each**, followed by the hub/brake assembly using factory recommended specifications.



Figure 3: Stub Axle Installed (Front View)



Figure 4: Stub Axle Installed (Rear View)